

微型直流电机仕様规格书

产品型号：GM25-370-24140-75-14.5D10

1. 标准使用条件 (Standard Operating Conditions)

NO.	項目 (Item)	規格 (Specification)	检验方法 (Test Method)
1.1	額定电压 (Rated Voltage)	DC 9.0V	电压表 (Multimeter)
1.2	速比 (Gear Ratio)	1/75	
1.3	马达转向 (Rotation)	CW	手感 (Handle)
1.4	姿势 (Motor Position)	检查时水平 (All position in horizontal)	手感 (Handle)
1.5	检测时时温度范围 Temperature	0 Degree - 30 Degree Celsius	温度计 (Thermometer)
1.6	检测时时湿度范围 Humidity	30% ~ 95%	湿度计 (Hygroscope)

2. 电机性能 (Performance Of Motors)

NO.	項目 (Item)	規格 (Specification)	检验方法 (Test Method)
2.1	空载转速 (No-load Speed)	11500±10%rpm	转速表 (Flash Speed Indicator)
2.2	空载电流 (No-load Current)	180mA(Max)	电流表 (DC Power Supply)
2.3	堵转电流 (Stall Current)	4500mA(Max)	电流表 (DC Power Supply)
2.4	堵转力矩 (Stall Torque)	160g.cm	扭力计 (Torque Measure)

3. 整机性能 (Performance of Gear motors)

NO.	項目 (Item)	規格 (Specification)	检验方法 (Test Method)
3.1	输出转速 (Output Speed)	150±10%rpm	转速表 (Flash Speed Indicator)
3.2	空载电流 (No-load Current)	200mA(Max)	电流表 (DC Power Supply)
3.3	堵转电流 (Stall Current)	4500mA(Max)	电流表 (DC Power Supply)
3.4	堵转力矩 (Stall Torque)	9.5kg.cm	扭力计 (Torque Measure)
3.5	负载力矩 (Rated Torque)	3000g.cm	扭力计 (Torque Measure)
3.6	负载电流 (Rated Current)	1200mA(Max)	电流表 (DC Power Supply)
3.7	负载转速 (Rated Speed)	100±10%rpm	转速表 (Flash Speed Indicator)
3.8	噪音 30CM (Noise)	56dB	分贝仪 (Digital Sound Lev d Meter)

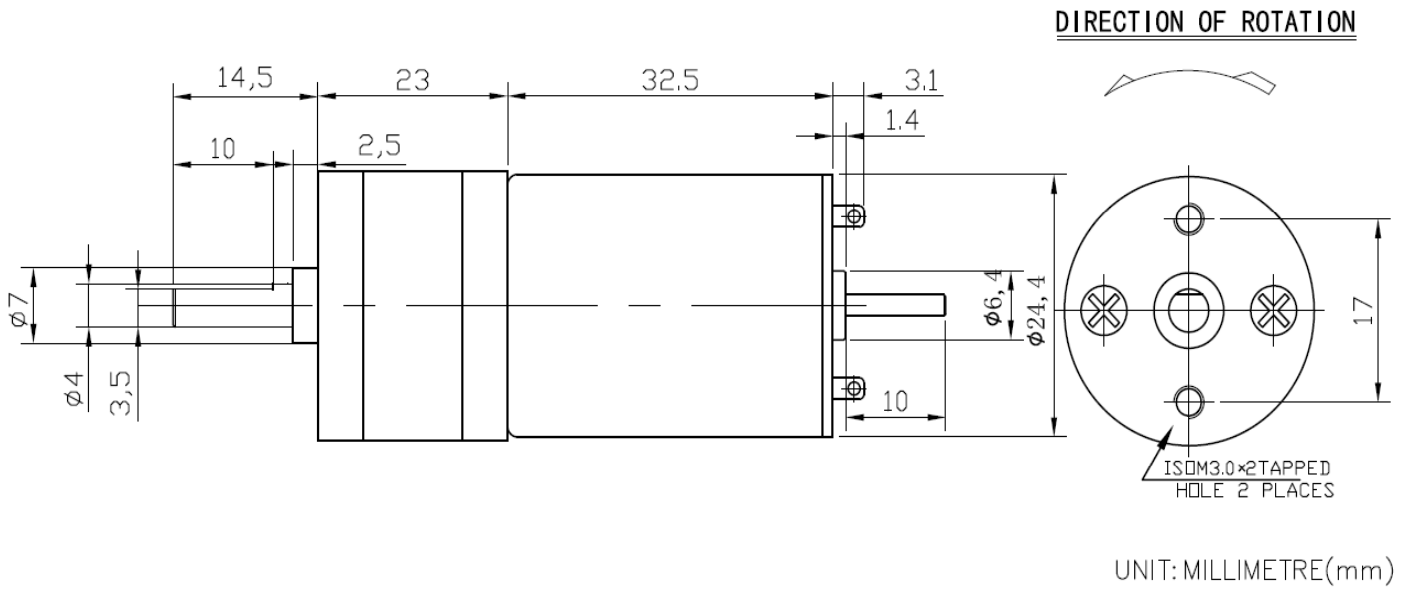
4. 基本尺寸 (The Dimension)

NO.	項目 (Item)	規格 (Specification)	检验方法 (Test Method)
4.1	轴伸尺寸 (The Outside Shaft Length)	14.5mm	卡尺 (Vernier Calipers)
4.2	轴向间隙 (Shaft End Play)	0.05-0.50mm	治具 (Frock)
4.3	螺孔 (Screw Size)	M3.0	治具 (Frock)
4.4	出轴直径 (Dia.of shaft)	Φ4mm D3.5	卡尺 (Vernier Calipers)
4.5	外形安装尺寸 (Outline Mounting Dimension)	Refer to the Outline Drawing	治具和卡尺 Calipe

5. 产品照片 (The product photos)



6. 产品外形图 (Product drawings)



7. 曲线图 (Curve drawings)

